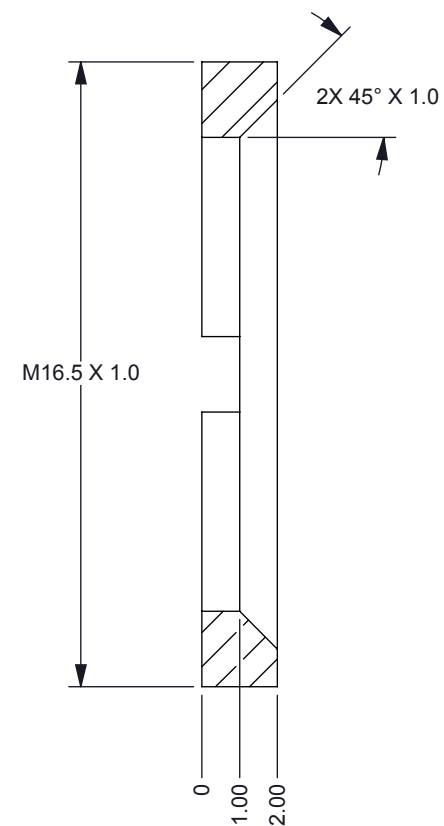
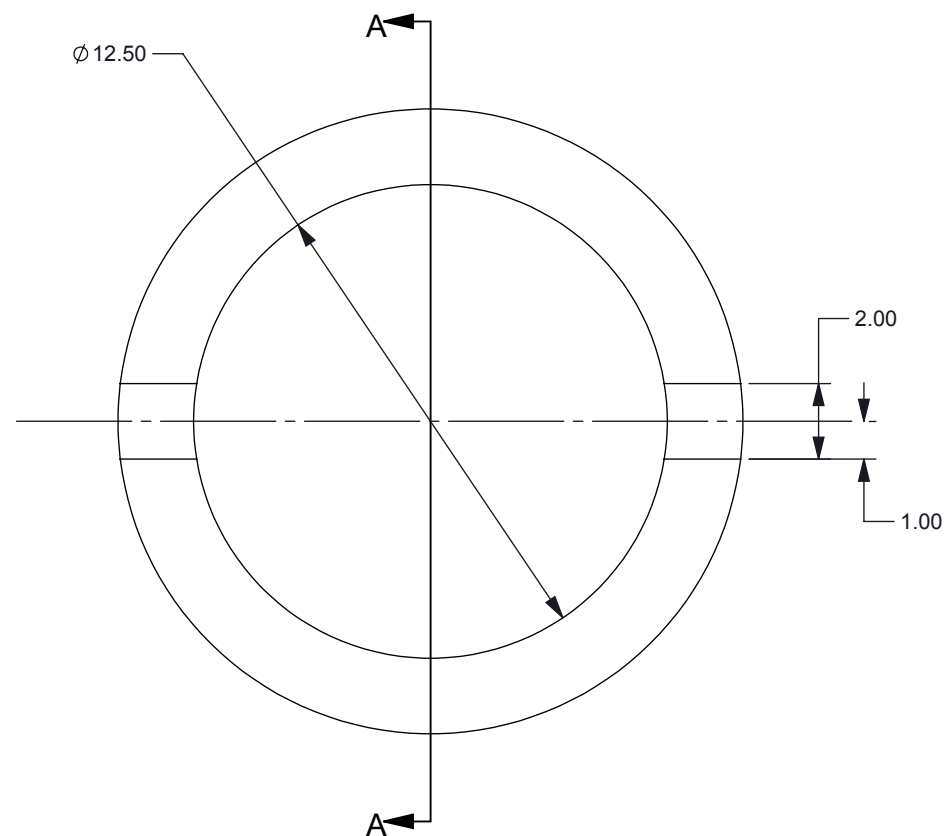
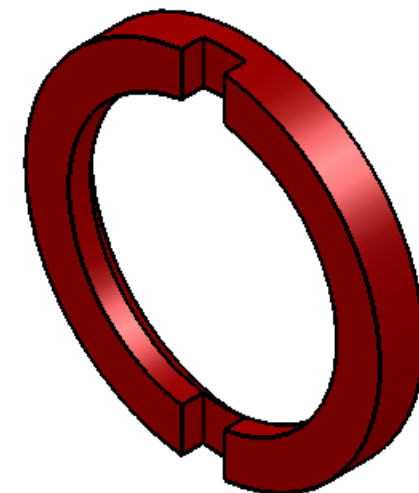



- NOTES: UNLESS OTHERWISE SPECIFIED:
1. MATERIAL: 6061-T6 ALUMINUM
 2. LIGHT BEADBLAST EXTERIOR SURFACES ONLY (MATTE FINISH); MASK INTERNAL FEATURES AND THREADING TO ENSURE TOLERANCES ARE HELD.
 3. FINISH: ANOPLATE ANOBLOCK EC PROCESS. ALTERNATE BLACK ANODIZING PROCESSES NOT CONSIDERED AN EQUIVALENT



SECTION A-A



		UNLESS OTHERWISE SPECIFIED <ul style="list-style-type: none">● DIMENSIONS ARE IN MILLIMETERS● TOLERANCES: ANGLES ±1° 2 PLACE DECIMALS ±0.25 1 PLACE DECIMALS ±0.50● DIMENSIONAL LIMITS APPLY BEFORE PROCESSES● INTERPRET DIMENSIONS IN ACCORDANCE WITH ASME Y14.5M-1994● REMOVE ALL BURRS AND SHARP EDGES● PARENTHETICAL INFO FOR REF ONLY	DWN R ROWE	DATE 9/8/2013	 TEXAS INSTRUMENTS	RETAINER RING, CL1			
			Engr						
			CQE/QA						
			CM						
						SIZE B	DWG NO 2513385	REV A	
				Apprvd		SCALE: 5:1		SHEET 1 OF 1	
NEXT ASSY		USED ON							
APPLICATION									